

iCAROS phase 1 Complex RD Energy Bid submission

Implementation guide

09/03/2023 | Training SA



Agenda for today

Recap of last session

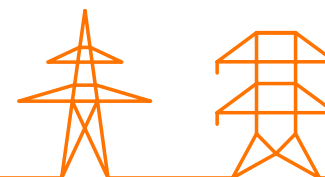
Specificities for RD bids

Complex bidding for RD Energy bid submission:

- How to link bids within a same QH: Exclusive groups
- How to link bids across QH: Conditional linking

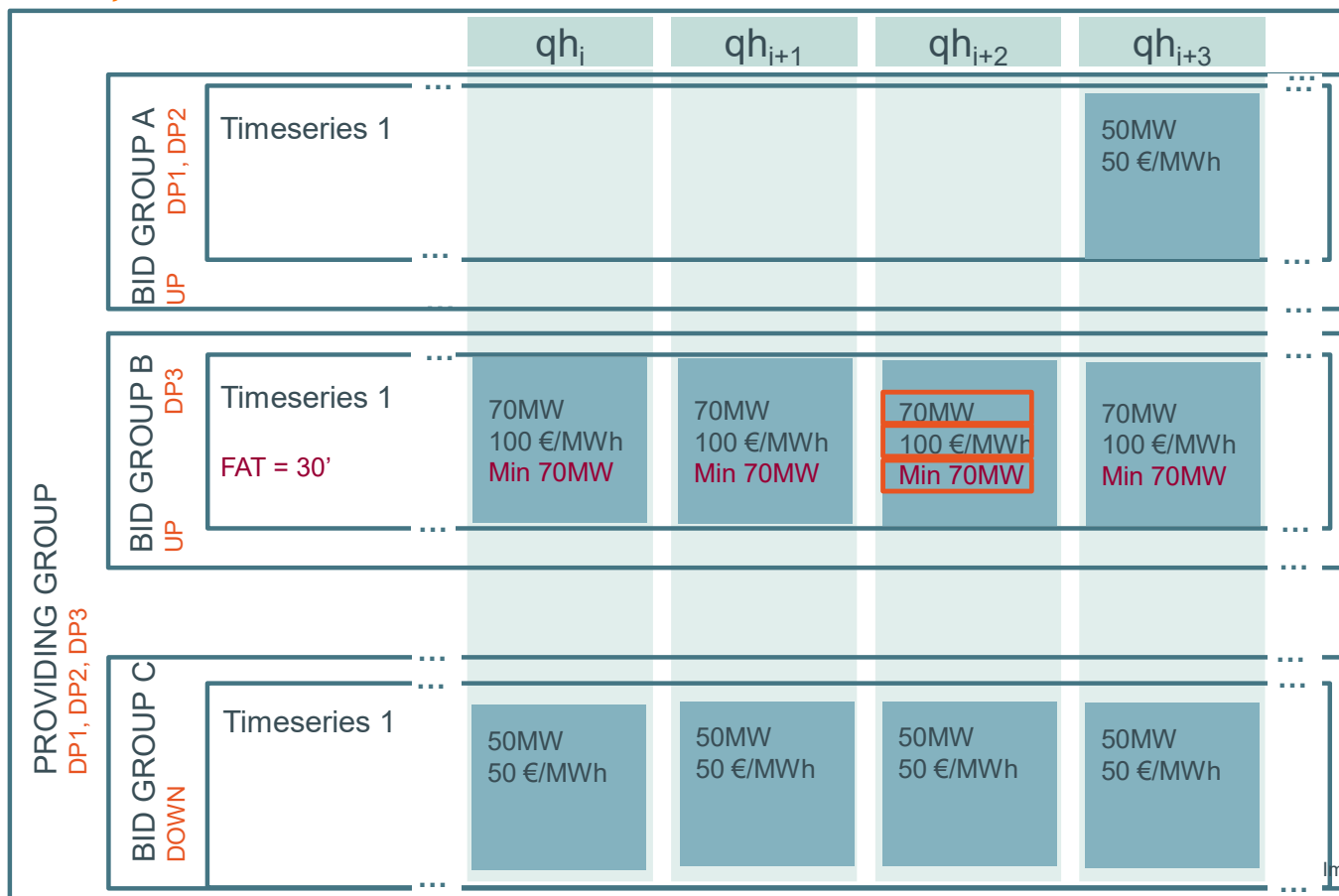
Examples:

- Complex biddings
- Full Activation Time
- Minimum Activation Time



BIDDING STRUCTURE

Price, volume and minimum volume are defined at bid level

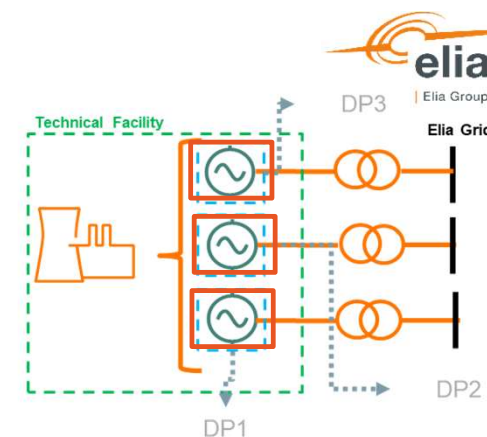


Energy bid characteristics	
Local design	ID
	List of Delivery points
Complex Bidding	Direction
	Bid price
	Bid volume
	Minimum bid volume
Redispaching only	Maximum activation time
	Quarter-hour linking (conditional links)
	Part of exclusive group Part of parent/child relation
Redispaching only	Full activation time
	Minimum activation time

BIDDING STRUCTURE

Delivery Points can be defined at multiple levels

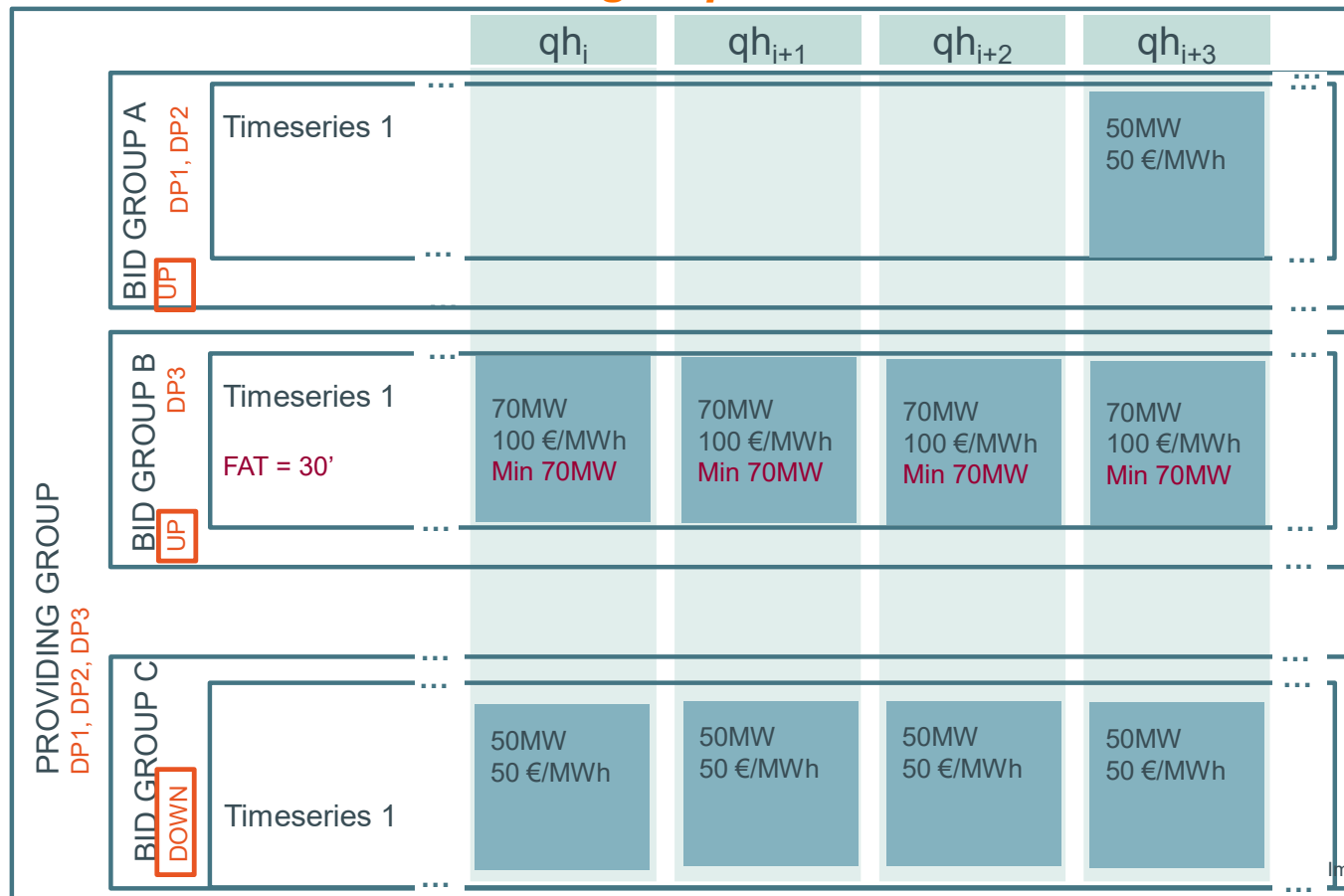
			qh_i	qh_{i+1}	qh_{i+2}
PROVIDING GROUP DP1, DP2, DP3	BID GROUP A UP DP1, DP2	Timeseries 1			50MW 50 €/MWh
	BID GROUP B UP FAT = 30'	Timeseries 1	70MW 100 €/MWh Min 70MW DP3	70MW 100 €/MWh Min 70MW DP3	70MW 100 €/MWh Min 70MW DP3
	BID GROUP C DOWN	Timeseries 1	50MW 50 €/MWh	50MW 50 €/MWh	50MW 50 €/MWh



- Providing group = Technical Facility
- Bid group = Operating mode

BIDDING STRUCTURE

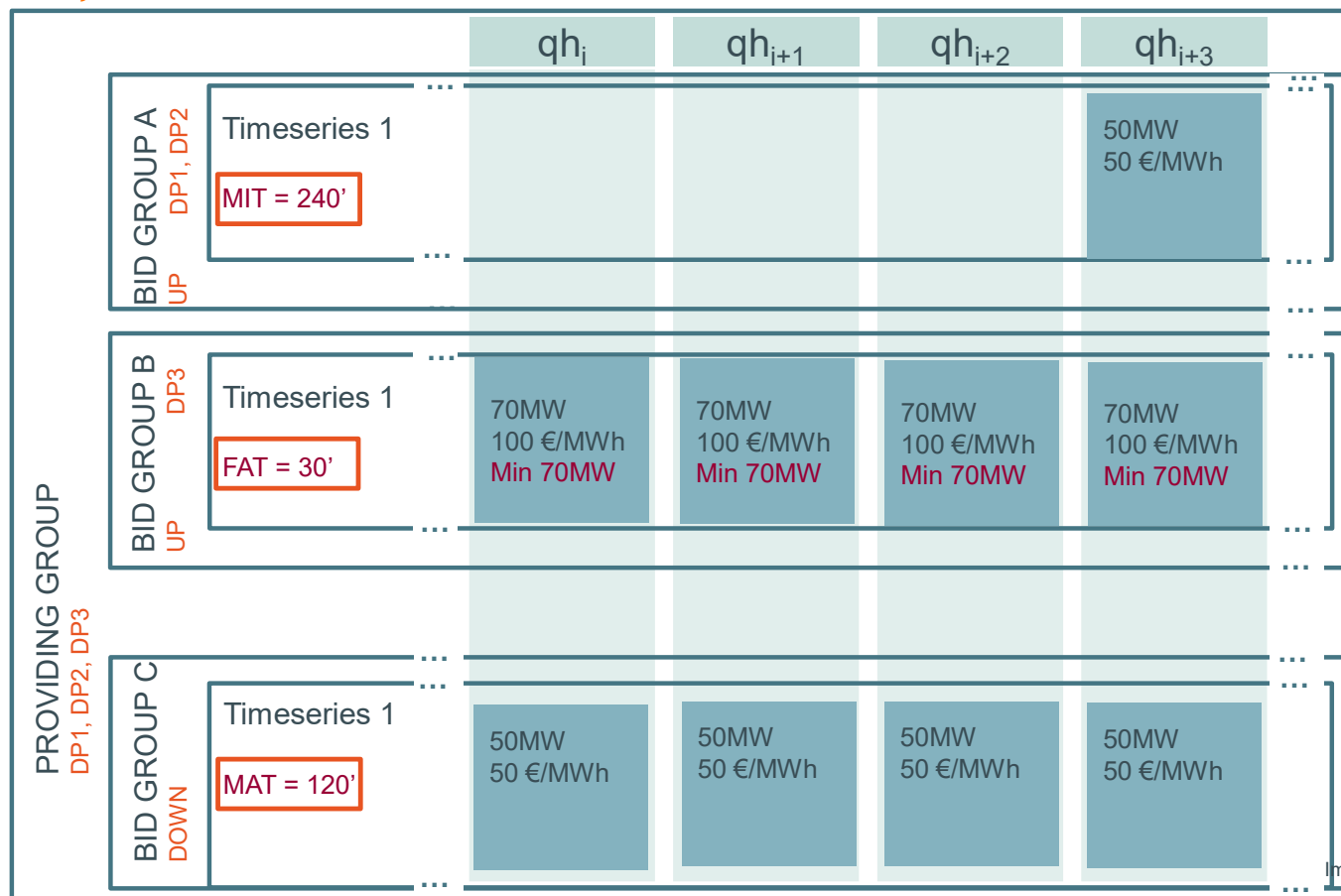
Direction is defined at bid group level



Energy bid characteristics	
	ID
	List of Delivery points
Local design	Direction
	Bid price
	Bid volume
	Minimum bid volume
	Maximum activation time
	Quarter-hour linking (conditional links)
Complex Bidding	Part of exclusive group
	Part of parent/child relation
Redispatching only	Full activation time
	Minimum activation time

BIDDING STRUCTURE

FAT, MAT and MIT are defined at Timeseries level*



Energy bid characteristics	
Local design	ID
	List of Delivery points
Complex Bidding	Direction
	Bid price
	Bid volume
	Minimum bid volume
	Maximum activation time
	Quarter-hour linking (conditional links)
	Part of exclusive group
Redispatching only	Part of parent/child relation
	Full activation time
	Minimum activation time

* MAT design fine-tuning is part of BSP facilitation and bid structure could be updated based on it.

GOAL OF THIS SESSION

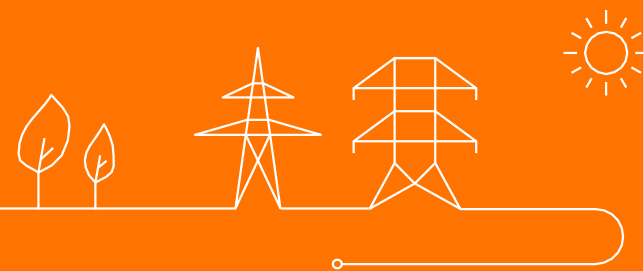
Energy bid characteristics	
Local design	ID
	List of Delivery points
	Direction
	Bid price
	Bid volume
	Minimum bid volume
	Maximum activation time
Complex Bidding	Quarter-hour linking (conditional links)
	Part of exclusive group
	Part of parent/child relation
Redispatching only	Full activation time
	Minimum activation time

To explain the usage of complex bidding (conditional links, exclusive groups and combination...) to offer flexibility of DPs in different operating modes for RD



SPECIFICITIES FOR RD BIDS

FAT



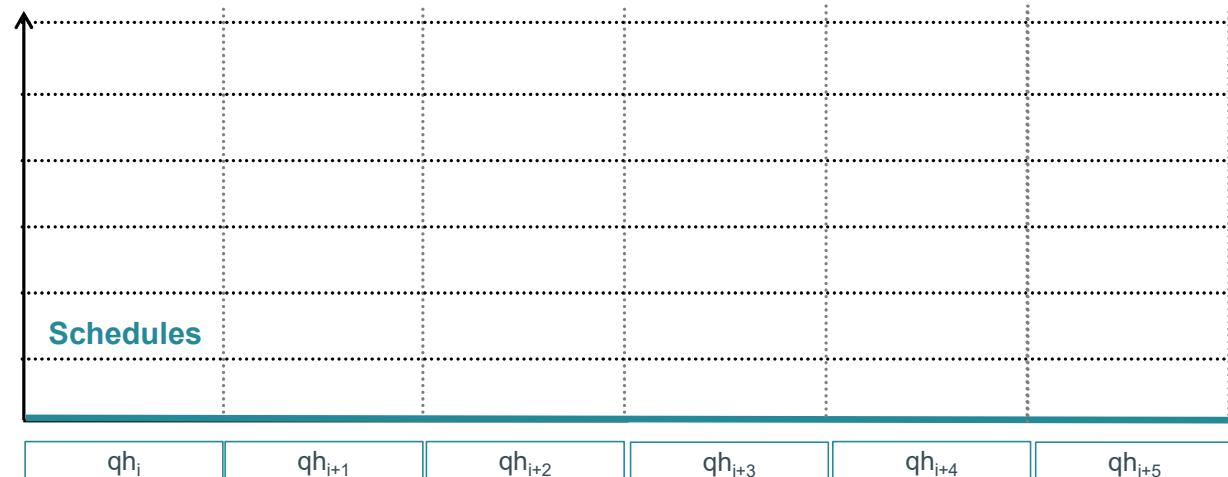
FULL ACTIVATION TIME

Example – initial situation

PROVIDING GROUP		qh_i	qh_{i+1}	qh_{i+2}	qh_{i+3}	qh_{i+4}	qh_{i+5}
DP1	BID GROUP A	Timeseries 1					
	UP	FAT = 45'					
		100MW 100 €/MWh Min 70MW	100MW 100 €/MWh Min 70MW	100MW 100 €/MWh Min 70MW	100MW 100 €/MWh Min 70MW	100MW 100 €/MWh Min 70MW	100MW 100 €/MWh Min 70MW

Initial situation (before activation)

- 1 Bid Groups with
 - DP1 initially not running (schedule = 0 MW)
 - FAT = 45 min
- All bids in these Bid Groups are **available**



Legend:

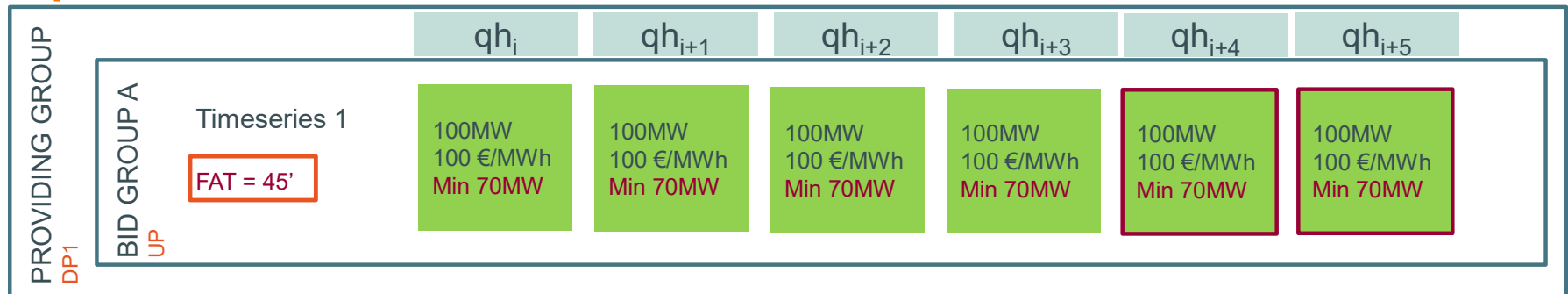
Bid **available** for selection and activation

Bid **selected / activated**

Bid **unavailable** for selection and activation

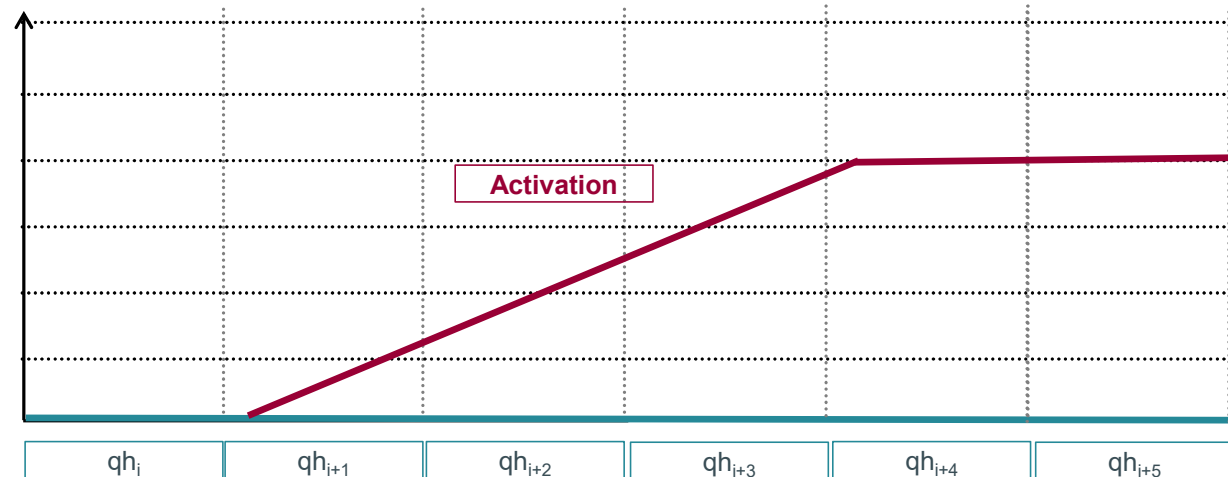
FULL ACTIVATION TIME

Example – initial situation



Final situation (at activation)

- Elia activates 100 MW from qh_{i+4} to qh_{i+10}
- Ramp-up start 45' (=FAT) before qh_{i+10}
- 100 MW are reached in qh_{i+10}



Legend:

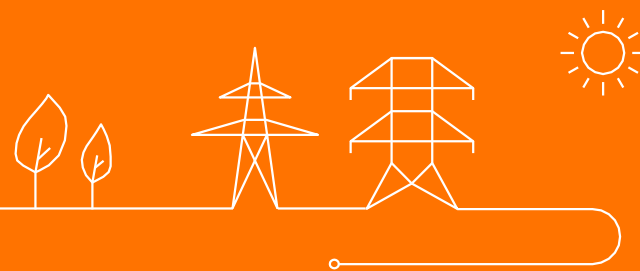
Bid
available for
selection and
activation

Bid **selected**
/ **activated**

Bid
unavailable
for selection
and activation

HOW TO LINK BIDS WITHIN THE SAME QH

Exclusive groups & Parent-child relations



HOW TO LINK BIDS WITHIN THE SAME QH

Exclusive groups & Parent-child relation

Simple bid

Simple bids can be linked **within the same quarter hour** to form **complex bids**

- Exclusive Group (=EG)

Only one or none of the bids in an exclusive group can be activated simultaneously

- Parent-child relation

The child cannot be activated if the parent has not been activated first

Bids cannot have both an exclusive bid identification and a parent-child identification



EXCLUSIVE GROUPS

Example 1/2



Initial situation (before activation)

- 3 Bid Groups with
 - same DP1
 - different MAT
 - Same Exclusive Group
- All bids in these Bid Groups are **available**

Only 1 bid per qb in this Exclusive Group can be activated

			qh _i	qh _{i+1}		qh _{i+5}	qh _{i+6}	...
PROVIDING GROUP DP1	BID GROUP A UP	Timeseries 1 MAT = 60' Exclusive Group DP1	200MW 50 €/MWh	50MW 50 €/MWh		50MW 50 €/MWh	50MW 50 €/MWh	...
	BID GROUP B UP	Timeseries 1 MAT = 120' Exclusive Group DP1	100MW 150 €/MWh	100MW 150 €/MWh		100MW 150 €/MWh	100MW 150 €/MWh	...
	BID GROUP C UP	Timeseries 1 MAT = 240' Exclusive Group DP1	50MW 250 €/MWh	50MW 250 €/MWh		50MW 250 €/MWh	50MW 250 €/MWh	...

Legend:

Bid available for selection and activation	Bid unavailable for selection and activation
---	---

EXCLUSIVE GROUPS

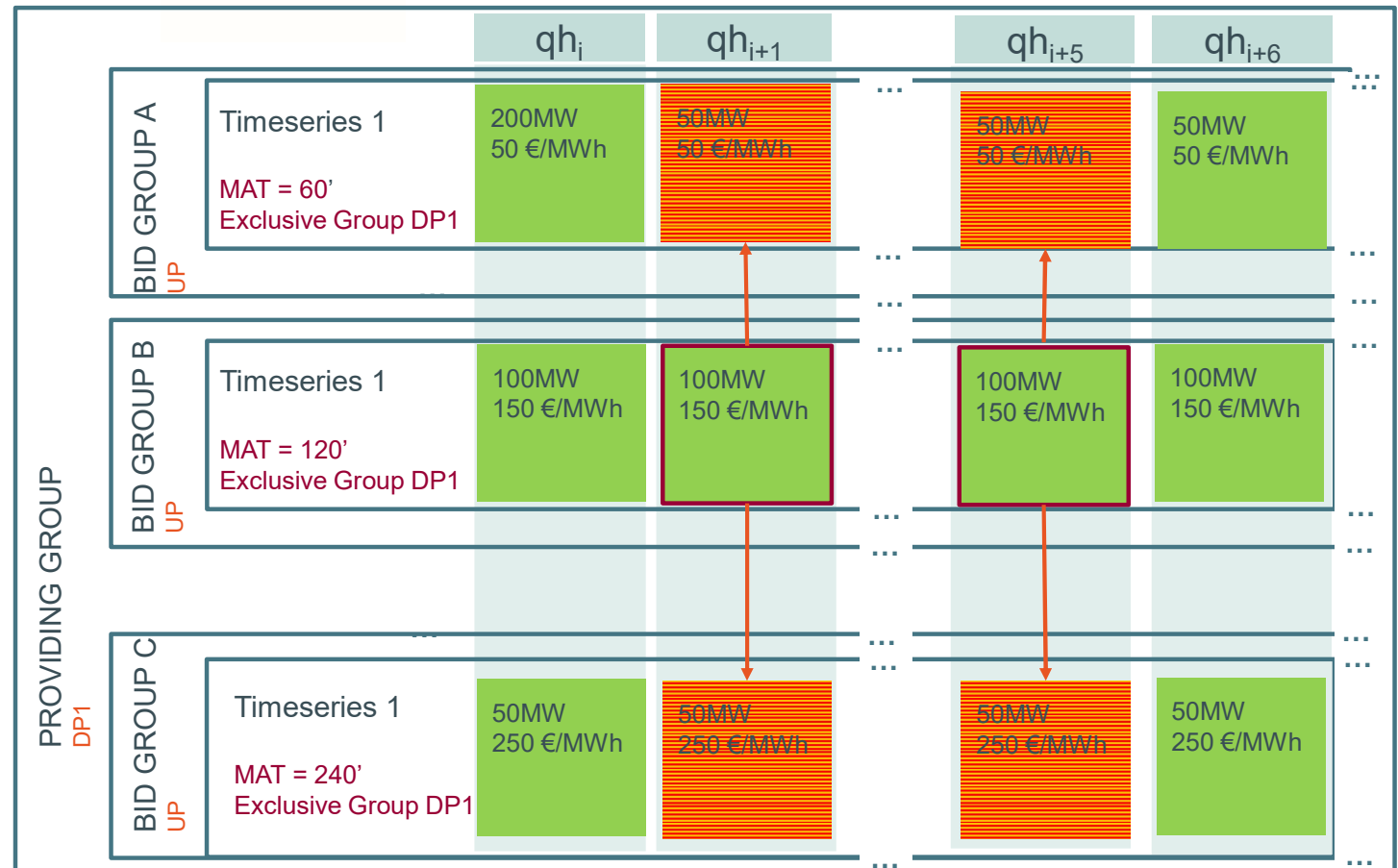
Example 2/2



Final situation (at activation)

→ Bid Group B is selected from $q_{h_{i+1}}$ to $q_{h_{i+5}}$

→ During this period all other bids in the Bid Groups of the Exclusive Group **cannot be selected**



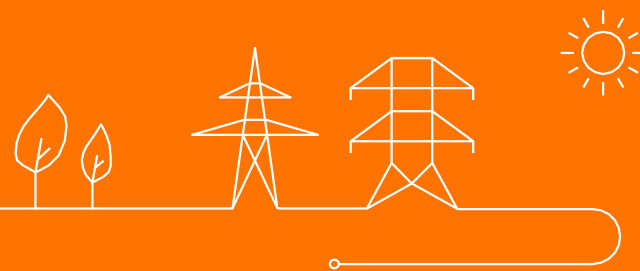
Legend:

Bid **available** for selection and activation

Bid **unavailable** for selection and activation

HOW TO LINK BIDS ACROSS QH

Conditional linking



HOW TO LINK BIDS ACROSS QH

Conditional linking*

Simple bid



Simple bids can be linked **through different quarter hour** to form **conditionally linked bids**

Maximum 6 links maximum 3 in QH-1 and 3 links in QH-2

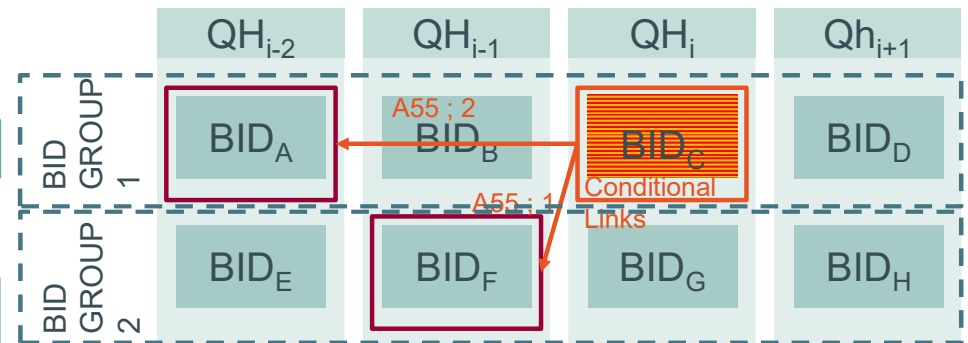
Different type of links:

A55 link: Bid initially **available**, becomes **unavailable** if linked bid activated

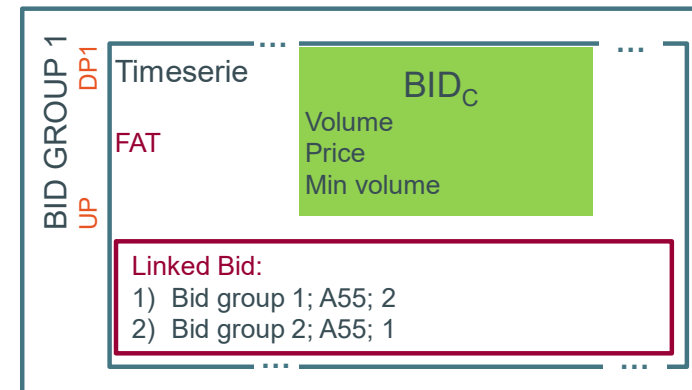
A67 link: Bid initially **unavailable**, becomes **available** if linked bid activated

A56 link : Bid initially **available**, becomes **unavailable** if linked bid not activated

A68 link: Bid initially **unavailable**, becomes **available** if linked bid not activated



Ex: Bid C is initially available and becomes unavailable
 → if Bid Group 1 is activated in QH-2
 → or if Bid Group 2 is activated in QH-1



* Also called quarter-hour linking

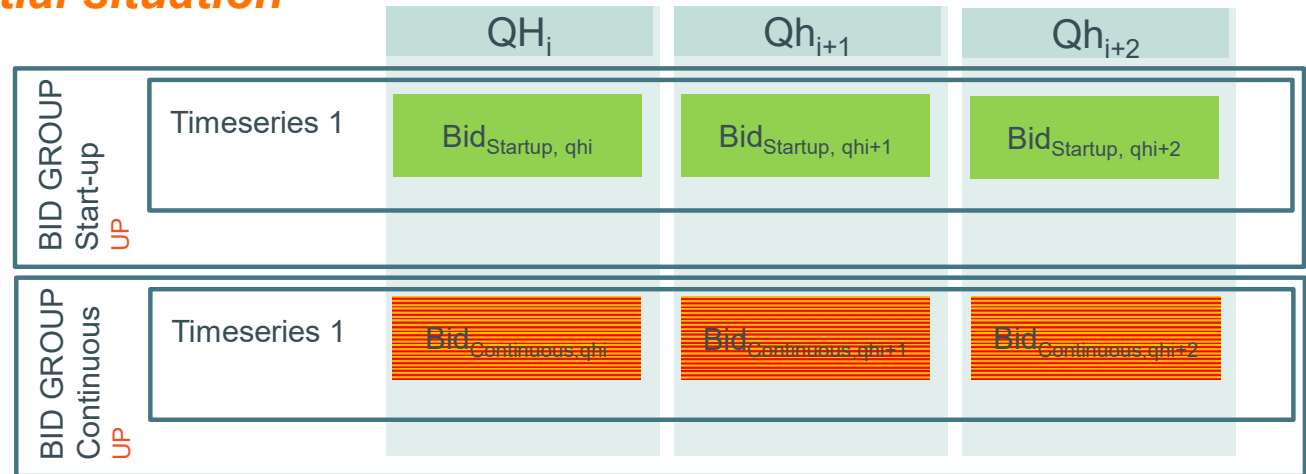
CONDITIONAL LINKING

Example of a start-up – initial situation

DP is not running

2 Bid Groups to reflect start-ups:

- **Start-up** bids
 - Must be activated during 1 qh before one Continuous bid becomes available
 - Includes the start-up time in FAT, start-up price...
 - Is initially **available**
- **Continuous** bid
 - Includes all properties of a running DP (FAT, price...)
 - Is initially **unavailable**



Legend:

Bid **available** for selection and activation

Bid **selected / activated**

Bid **unavailable** for selection and activation

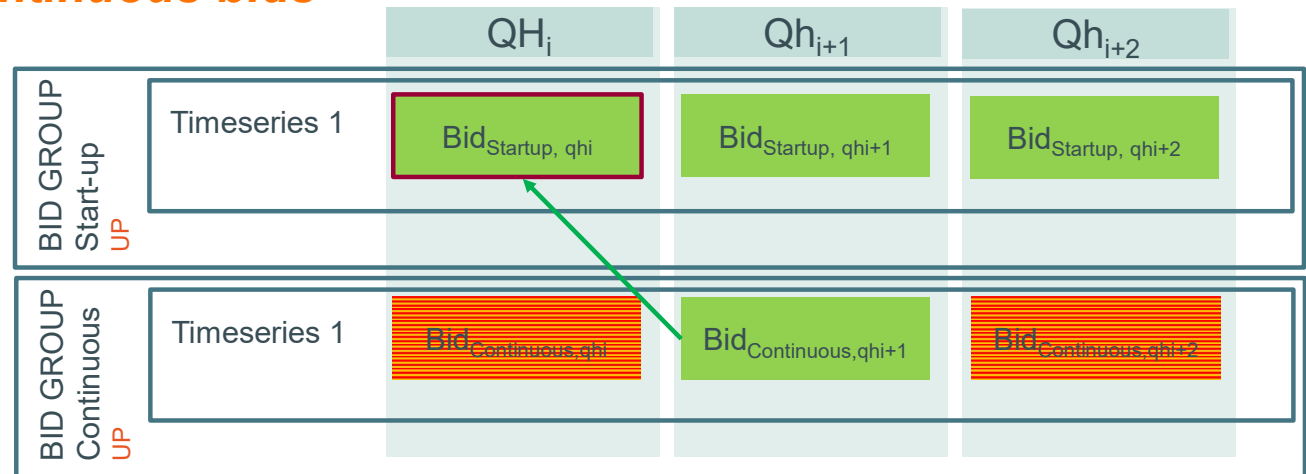
CONDITIONAL LINKING

Example of a start-up – continuous bids

DP is not running

2 Bid Groups to reflect start-ups:

- **Start-up** bids
 - initially **available**
- **Continuous** bid is
 - initially **unavailable**
 - Becomes available if Bid_{Startup, qh-1} is activated: **A67 link** →



Legend:

Bid **available** for selection and activation

Bid **selected / activated**

Bid **unavailable** for selection and activation

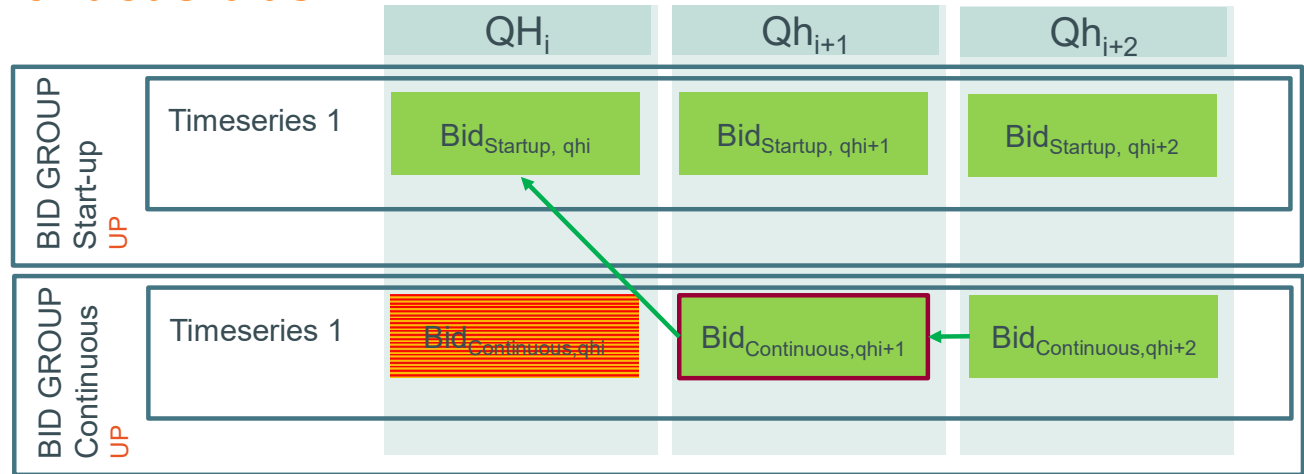
CONDITIONAL LINKING

Example of a start-up – continuous bids

DP is not running

2 Bid Groups to reflect start-ups:

- **Start-up** bids
 - initially **available**
- **Continuous** bid is
 - initially **unavailable**
 - Becomes available if $Bid_{Startup, qh-1}$ is activated: **A67 link**
 - Or Becomes available if $Bid_{Continuous, qh-1}$ is activated: **A67 link** →



Legend:

Bid **available** for selection and activation

Bid **selected / activated**

Bid **unavailable** for selection and activation

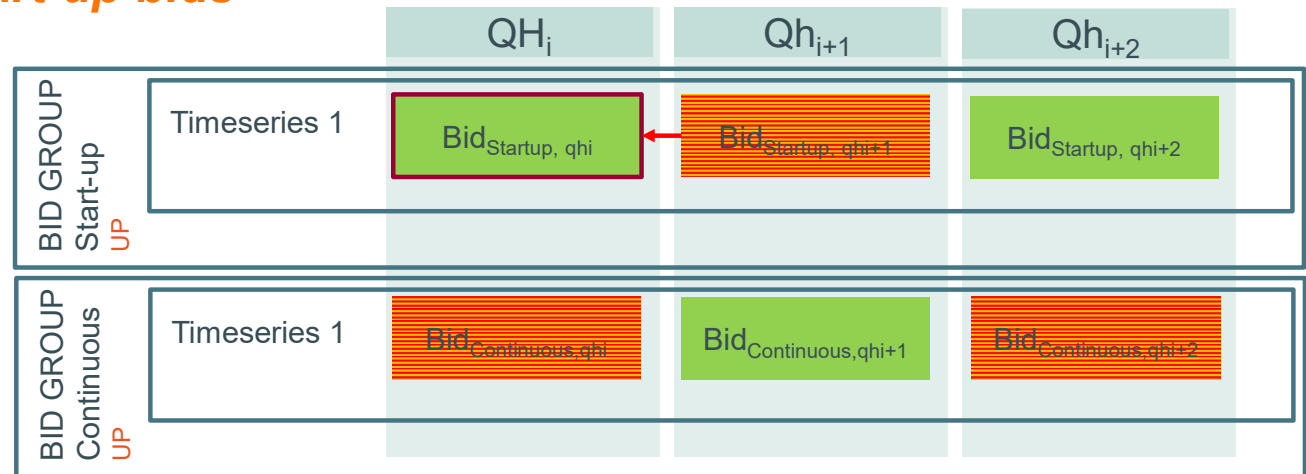
CONDITIONAL LINKING

Example of a start-up – start-up bids

DP is not running

2 Bid Groups to reflect start-ups:

- **Start-up** bids
 - initially **available**
 - Becomes **unavailable** if Bid_{Startup, qh-1} is activated: **A55 link**
- **Continuous** bid is
 - initially **unavailable**



Legend:

Bid **available** for selection and activation

Bid **selected / activated**

Bid **unavailable** for selection and activation

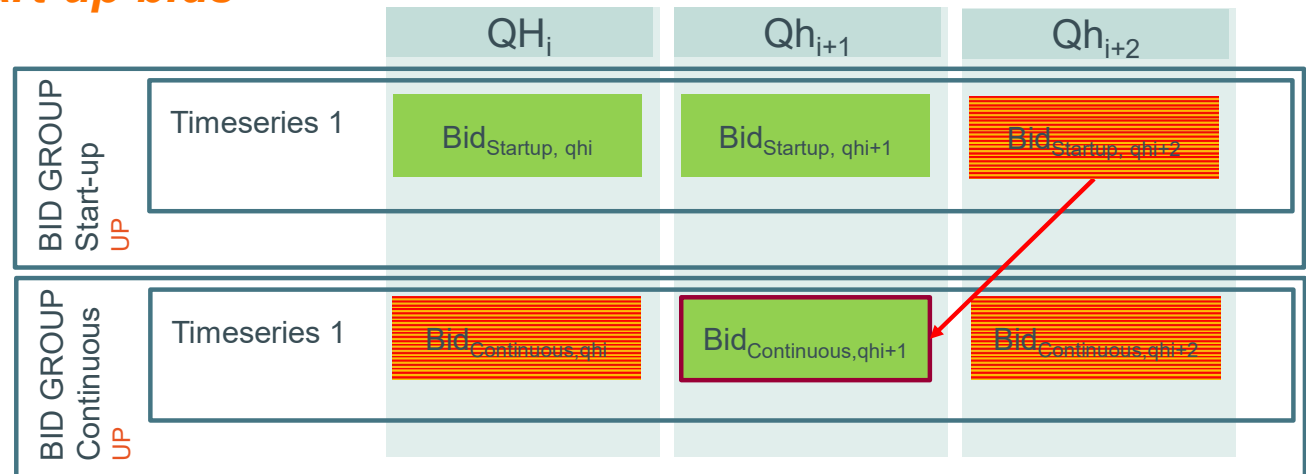
CONDITIONAL LINKING

Example of a start-up – start-up bids

DP is not running

2 Bid Groups to reflect start-ups:

- **Start-up** bids
 - initially **available**
 - Becomes **unavailable** if $Bid_{Startup, qh-1}$ is activated: **A55 link**
 - Becomes **unavailable** if $Bid_{Continuous, qh-1}$ is activated: **A55 link**
- **Continuous** bid is
 - initially **unavailable**



Legend:

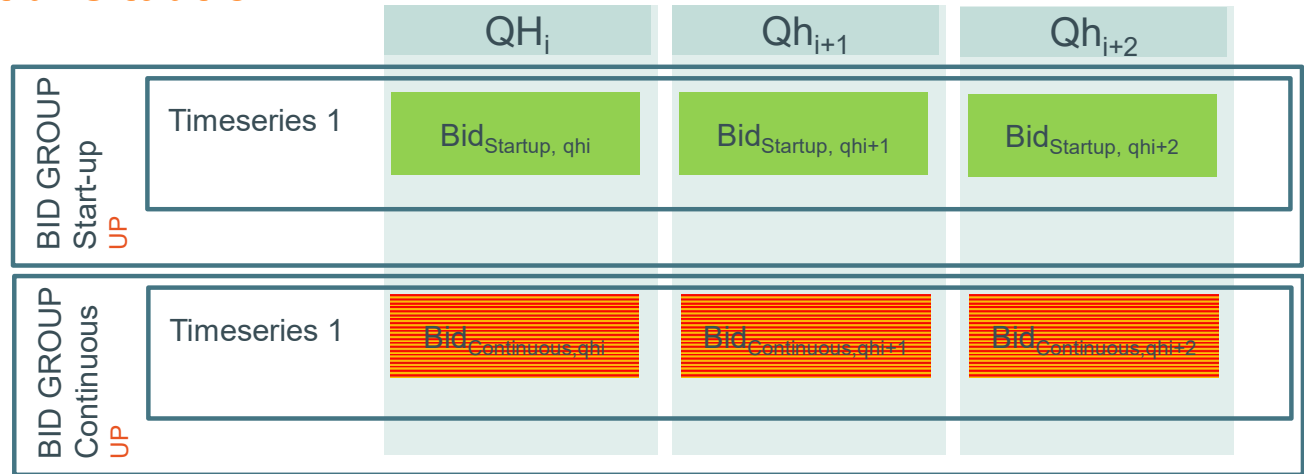
Bid **available** for selection and activation

Bid **selected / activated**

Bid **unavailable** for selection and activation

CONDITIONAL LINKING

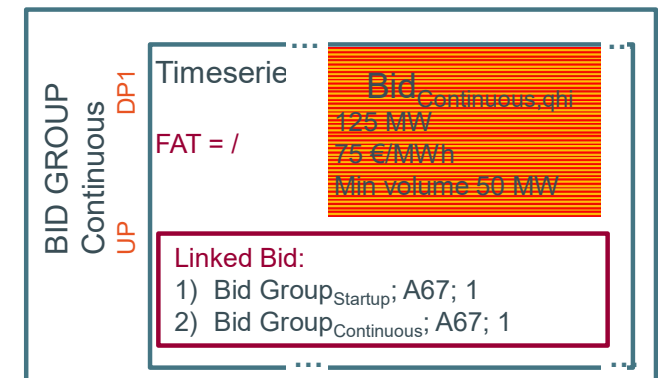
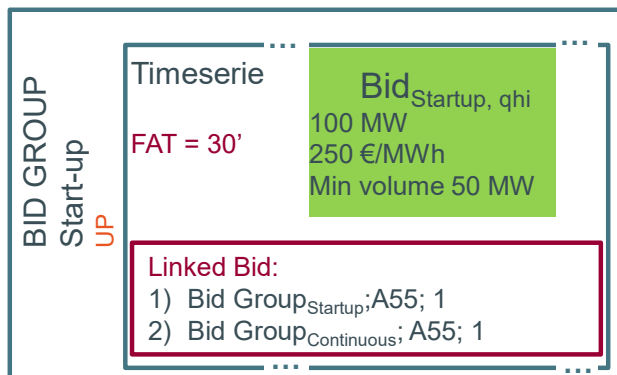
Example of a start-up – initial situation



DP is not running

2 Bid Groups to reflect start-ups:

- **Start-up bids**
 - initially **available**
 - Becomes **unavailable** if Bid_{Startup, qh-1} is activated: **A55 link**
 - Becomes **unavailable** if Bid_{Continuous, qh-1} is activated: **A55 link**
- **Continuous bid**
 - is initially **unavailable**
 - Becomes available if Bid_{Startup, qh-1} is activated: **A67 link**
 - Or Becomes available if Bid_{Continuous, qh-1} is activated: **A67 link**

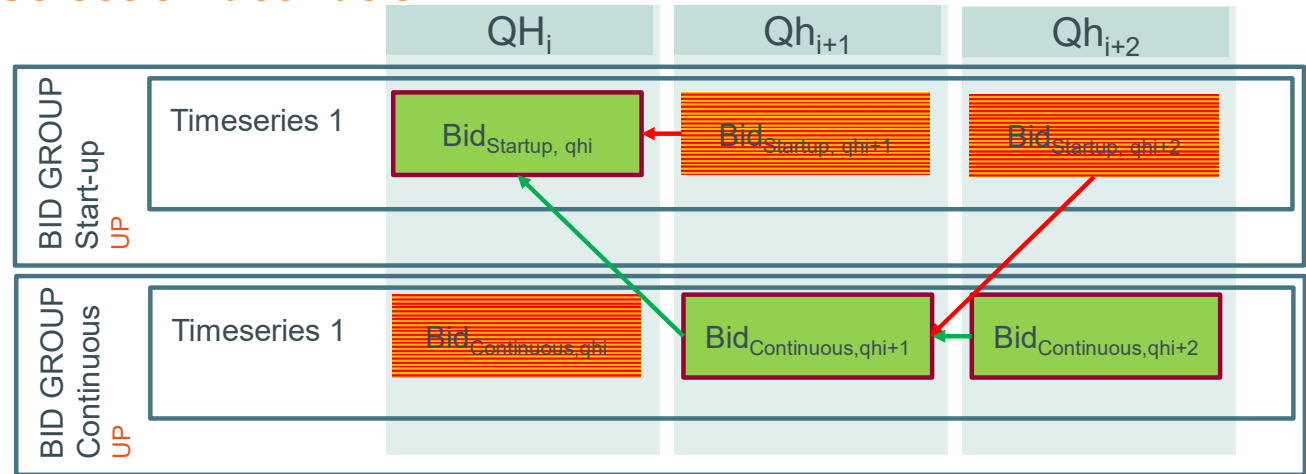


Legend:



CONDITIONAL LINKING

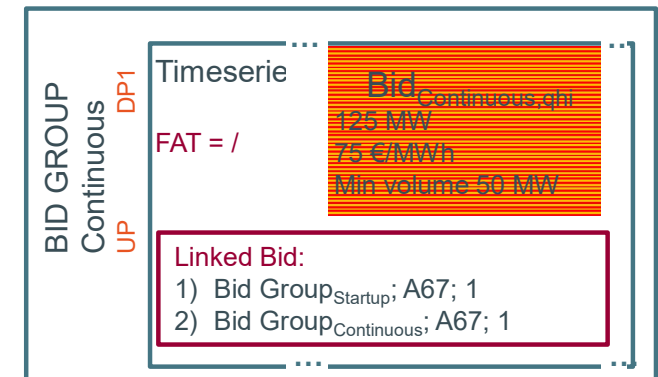
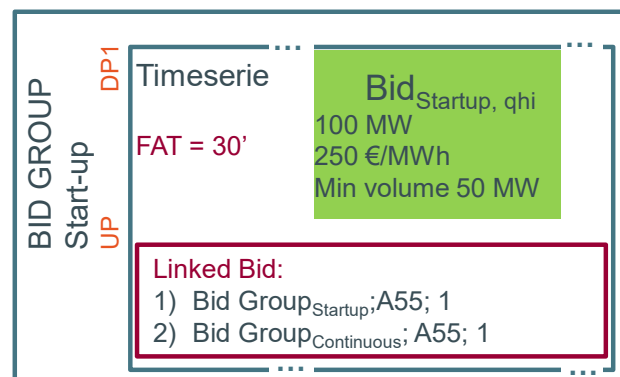
Example of a start-up – at selection/activation



DP is not running

2 Bid Groups to reflect start-ups:

- **Start-up** bids
 - initially **available**
 - FAT is used to reflect start-up time
 - Becomes **unavailable** if $Bid_{Startup, qh-1}$ is activated: **A55 link**
 - Becomes **unavailable** if $Bid_{Continuous, qh-1}$ is activated: **A55 link**
- **Continuous** bid
 - is initially **unavailable**
 - Becomes available if $Bid_{Startup, qh-1}$ is activated: **A67 link**
 - Or Becomes available if $Bid_{Continuous, qh-1}$ is activated: **A67 link**

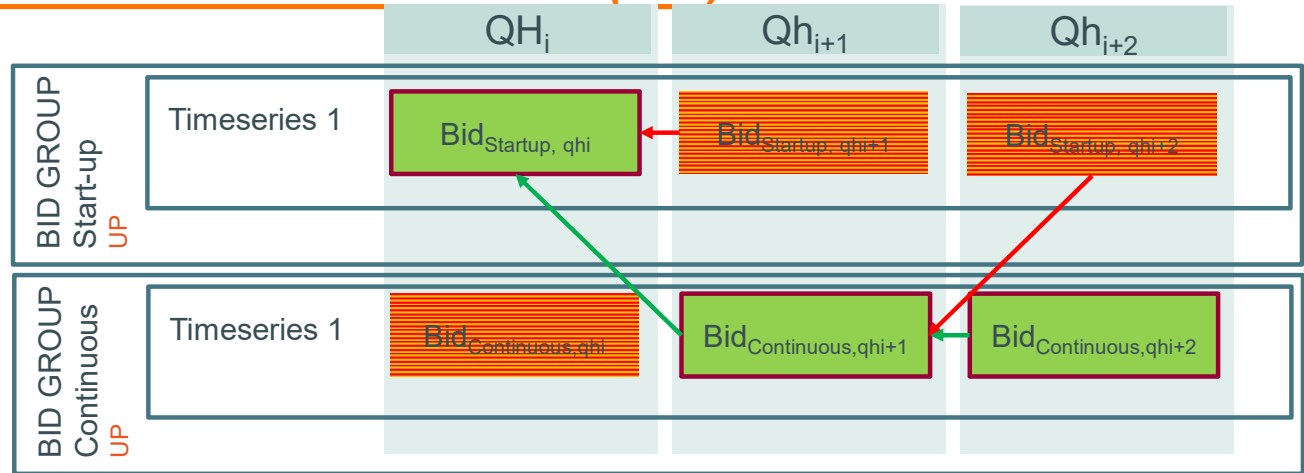


Legend:



CONDITIONAL LINKING

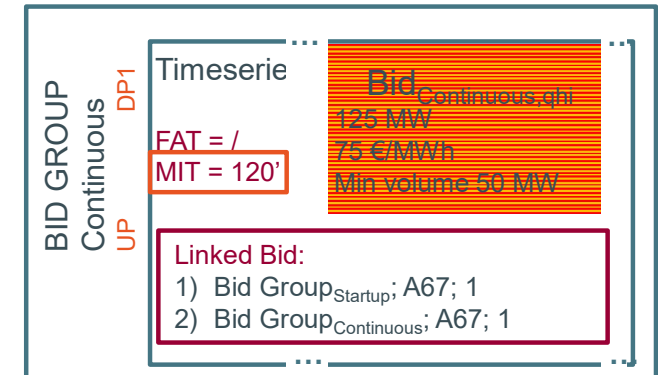
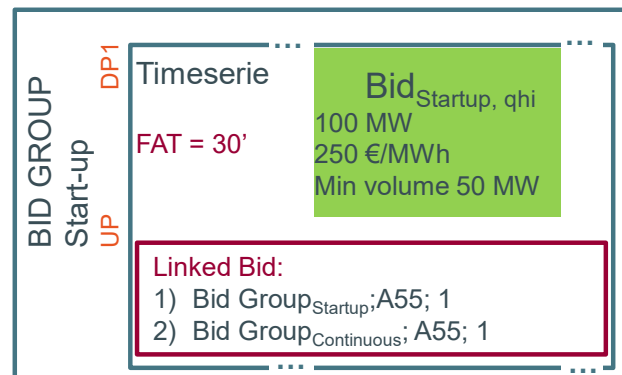
Example of a start-up with Minimum Activation Time (MIT)



DP is not running

2 Bid Groups to reflect start-ups:

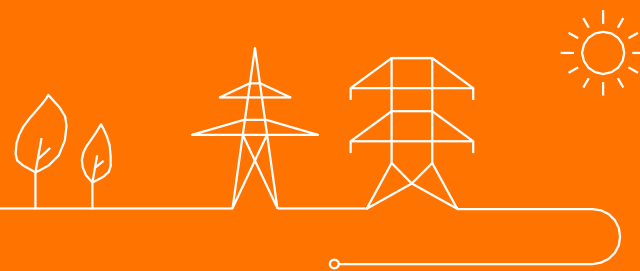
- **Start-up bids**
 - initially **available**
 - Becomes **unavailable** if $Bid_{Startup, qh-1}$ is activated: **A55 link**
 - Becomes **unavailable** if $Bid_{Continuous, qh-1}$ is activated: **A55 link**
- **Continuous bid**
 - is initially **unavailable**
 - **Has a MIT**
 - Becomes available if $Bid_{Startup, qh-1}$ is activated: **A67 link**
 - Or Becomes available if $Bid_{Continuous, qh-1}$ is activated: **A67 link**



Legend:

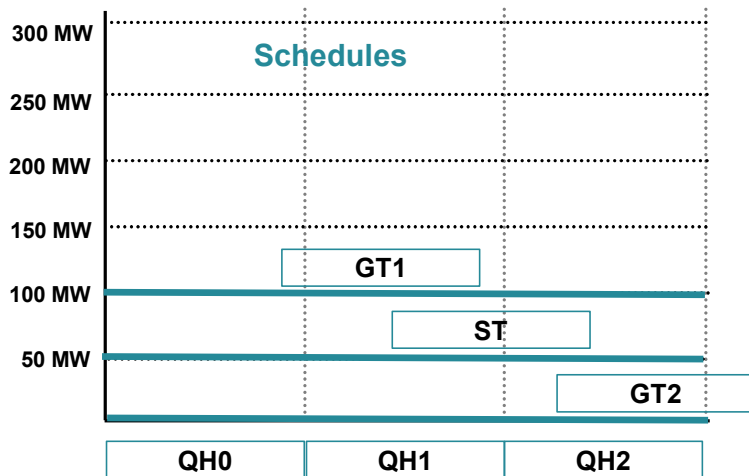
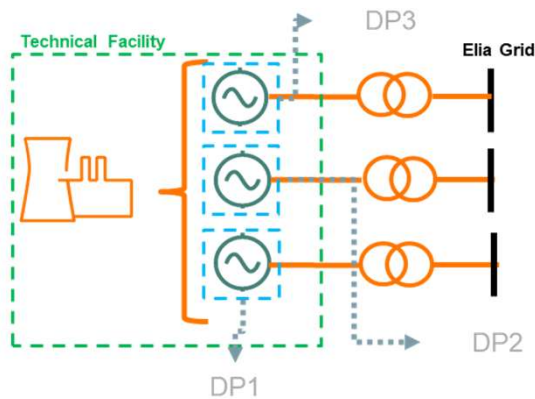


Example of complex biddings



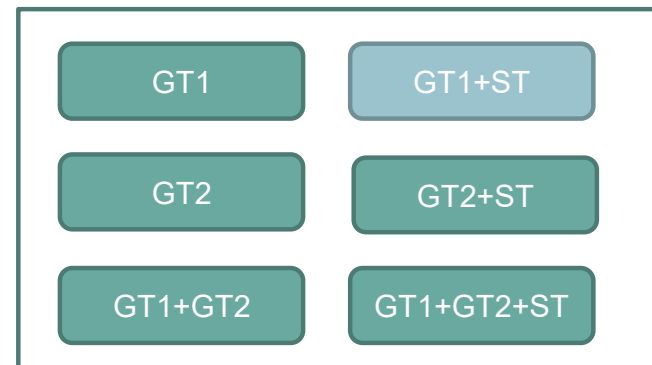
EXAMPLE OF COMPLEX BIDDING

Combination of Conditional links & Exclusive Groups to reflect Operating modes*



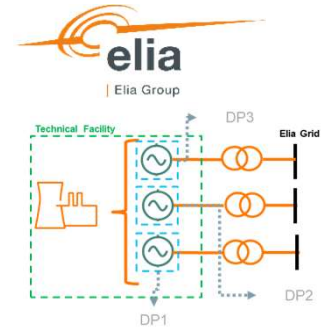
Hypothesis:

- A CCGT with 3 DPs: GT1, GT2 & ST
- This CCGT can technically be operated in multiple Operating modes:



- Current operating mode is (GT1+ST)
- By using the combination of Conditional links and Exclusive Groups, the flexibility of the running operating mode and the all other operating mode can be submitted.

	Pmax	Pmin	Schedule
GT1	150 MW	30 MW	100 MW
GT2	150 MW	30 MW	0 MW
ST	100 MW	20 MW	50 MW



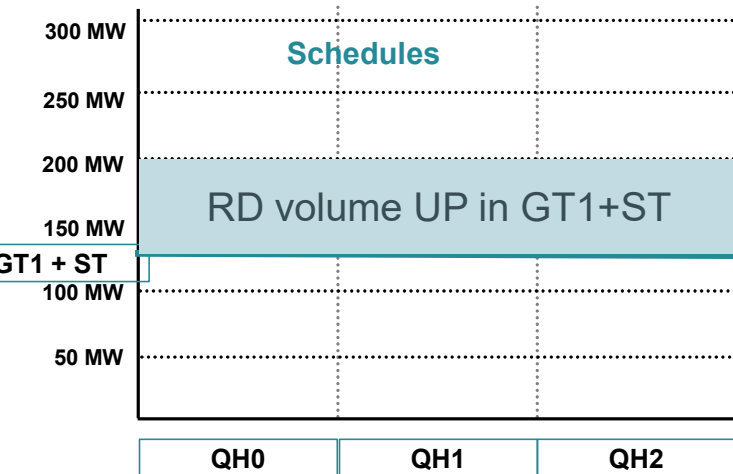
EXAMPLE OF COMPLEX BIDDING

Combination of Conditional links & Exclusive Groups to reflect Operating modes

Current operating mode:

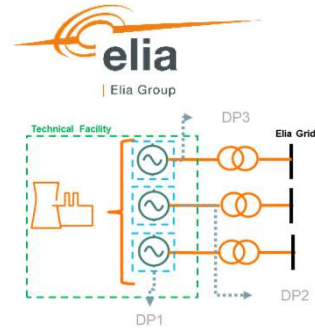
GT1+ST

	Pmax	Pmin	Schedule
GT1	150 MW	30 MW	100 MW
GT2	150 MW	30 MW	0 MW
ST	100 MW	20 MW	20 MW



EXAMPLE OF COMPLEX BIDDING

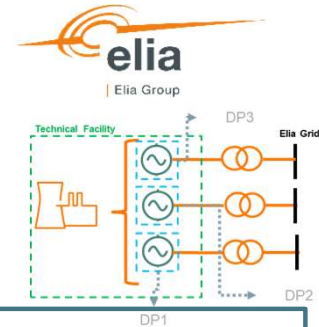
Combination of Conditional links & Exclusive Groups to reflect Operating modes



Current operating mode:

GT1+ST

Bid Group		Status			
Bid Group Id	GT1_ST_continuous	Active			
TimeSeries Id	GT1_ST_continuous-UP-				
Direction	UP				
Contracted/Non Contracted					
Parent Child Id					
Exclusive Group Ids	GT1		00:00	00:15	00:30
Linked Bid Group Id		Volume	80	80	80
Linked Bid Status		Price	150	150	150
Linked Bid Level		Minimum Volume			
Full Activation Time		Activation Type			
Maximum Activation Time		Reason			
Delivery Points	EAN	GT1	TRUE	TRUE	TRUE
	EAN	GT2	TRUE	TRUE	TRUE



EXAMPLE OF COMPLEX BIDDING

Combination of Conditional links & Exclusive Groups to reflect Operating modes

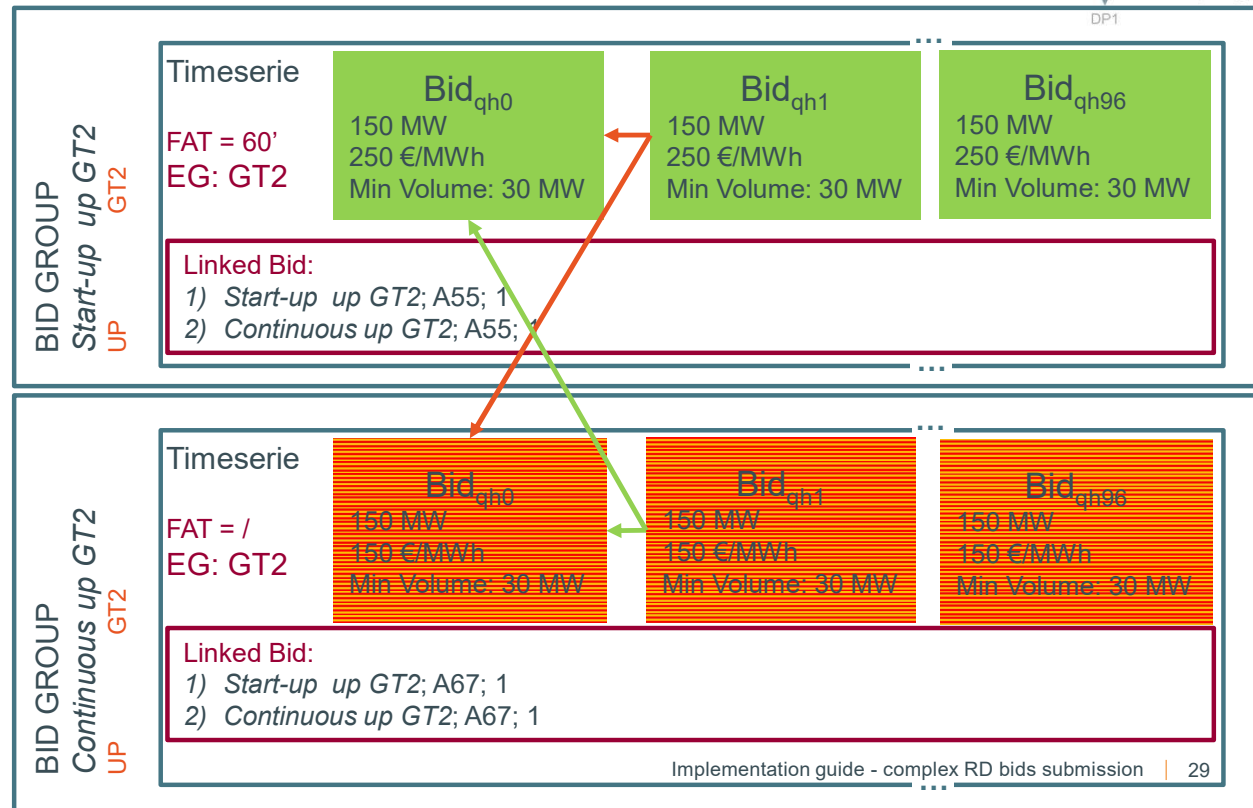
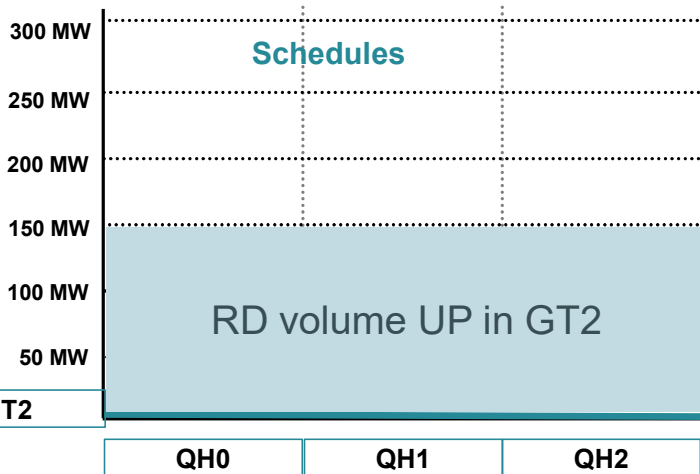
Start-up of other operating mode:

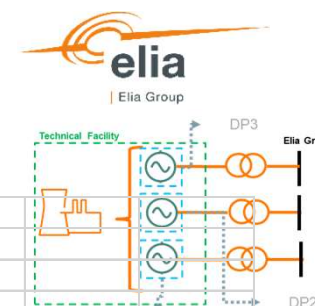
GT2

	Pmax	Pmin	Schedule
GT1	150 MW	30 MW	100 MW
GT2	150 MW	30 MW	0 MW
ST	100 MW	20 MW	20 MW

Schedules

RD volume UP in GT2





EXAMPLE OF COMPLEX BIDDING

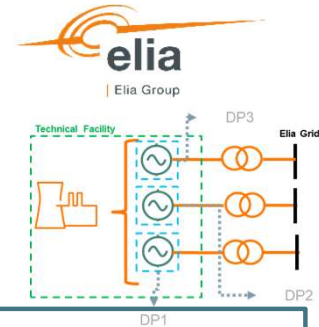
Combination of Conditional links & Exclusive Groups to reflect Operating modes

Start-up of other operating mode:

GT2

Bid Group		Status				
Bid Group Id	GT2_startup	Active				
TimeSeries Id	GT2_startup-UP-					
Direction	UP					
Contracted/Non Contracted						
Parent Child Id						
Exclusive Group Ids	GT2	00:00	00:15	00:30	00:45	
Linked Bid Group Id	GT2_startup;GT2_continuous	Volume	150	150	150	150
Linked Bid Status	A55;A55	Price	250	250	250	250
Linked Bid Level	1;1	Minimum Volume	30	30	30	30
Full Activation Time	30	Activation Type				
Maximum Activation Time		Reason				
Delivery Points	EAN	GT2	TRUE	TRUE	TRUE	TRUE

Bid Group		Status				
Bid Group Id	GT2_continuous	Active				
TimeSeries Id	GT2_continuous-UP-					
Direction	UP					
Contracted/Non Contracted						
Parent Child Id						
Exclusive Group Ids	GT2	00:00	00:15	00:30	00:45	
Linked Bid Group Id	GT2_startup;GT2_continuous	Volume	150	150	150	150
Linked Bid Status	A67;A67	Price	150	150	150	150
Linked Bid Level	1;1	Minimum Volume	30	30	30	30
Full Activation Time		Activation Type				
Maximum Activation Time		Reason				
Delivery Points	EAN	GT2	TRUE	TRUE	TRUE	TRUE



EXAMPLE OF COMPLEX BIDDING

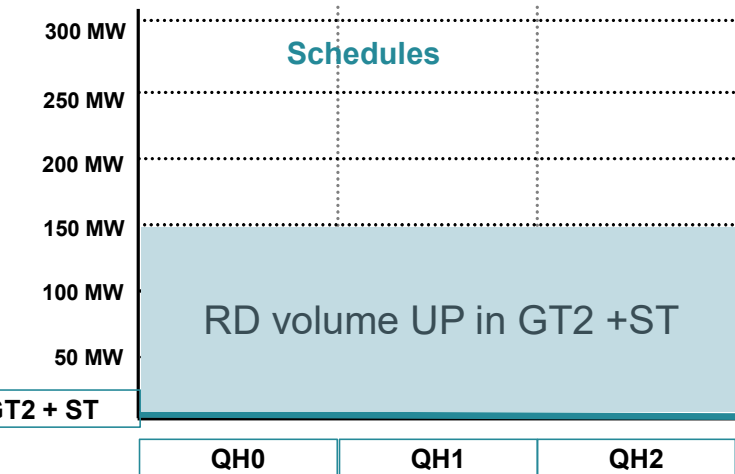
Combination of Conditional links & Exclusive Groups to reflect Operating modes

Start-up of other operating mode:

GT2 + ST

	Pmax	Pmin	Schedule
GT1	150 MW	30 MW	100 MW
GT2	150 MW	30 MW	0 MW
ST	100 MW	20 MW	20 MW

Schedules



BID GROUP
Start-up up GT2+ST
UP GT2;ST

Timeserie

Bid_{qh0}
175 MW
250 €/MWh
Min Volume: 50 MW

Bid_{qh1}
175 MW
250 €/MWh
Min Volume: 50 MW

Bid_{qh96}
175 MW
250 €/MWh
Min Volume: 50 MW

Linked Bid:

- 1) Start-up up GT2+ST; A55; 1
- 2) Continuous up GT2+ST; A55; 1

BID GROUP
Continuous up GT2+ST
UP GT2;ST

Timeserie

Bid_{qh0}
175 MW
150 €/MWh
Min Volume: 50 MW

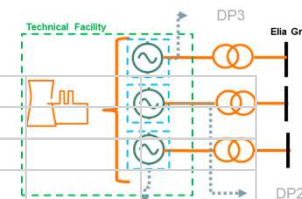
Bid_{qh1}
175 MW
150 €/MWh
Min Volume: 50 MW

Bid_{qh96}
175 MW
150 €/MWh
Min Volume: 50 MW

Linked Bid:

- 1) Start-up up GT2+ST; A67; 1
- 2) Continuous up GT2+ST; A67; 1

Implementation guide - complex RD bids submission | 31



EXAMPLE OF COMPLEX BIDDING

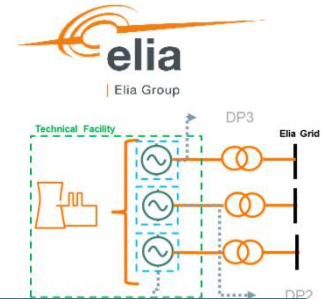
Combination of Conditional links & Exclusive Groups to reflect Operating modes

Start-up of other operating mode:

GT2 + ST

Bid Group		Status				
Bid Group Id	GT2_ST_startup	Active				
TimeSeries Id	GT2_ST_startup-UP-					
Direction	UP					
Contracted/Non Contracted						
Parent Child Id						
Exclusive Group Ids	GT2		00:00	00:15	00:30	00:45
Linked Bid Group Id	GT2_ST_startup;GT2_ST_continuous	Volume	175	175	175	175
Linked Bid Status	A55;A55	Price	250	250	250	250
Linked Bid Level	1;1	Minimum Volume	50	50	50	50
Full Activation Time	60	Activation Type				
Maximum Activation Time		Reason				
Delivery Points	EAN	GT2	TRUE	TRUE	TRUE	TRUE
	EAN	ST	TRUE	TRUE	TRUE	TRUE

Bid Group		Status				
Bid Group Id	GT2_ST_continuous	Active				
TimeSeries Id	GT2_ST_continuous-UP-					
Direction	UP					
Contracted/Non Contracted						
Parent Child Id						
Exclusive Group Ids	GT2		00:00	00:15	00:30	00:45
Linked Bid Group Id	GT2_ST_startup;GT2_ST_continuous	Volume	175	175	175	175
Linked Bid Status	A67;A67	Price	150	150	150	150
Linked Bid Level	1;1	Minimum Volume	50	50	50	50
Full Activation Time		Activation Type				
Maximum Activation Time		Reason				
Delivery Points	EAN	GT2	TRUE	TRUE	TRUE	TRUE
	EAN	ST	TRUE	TRUE	TRUE	TRUE



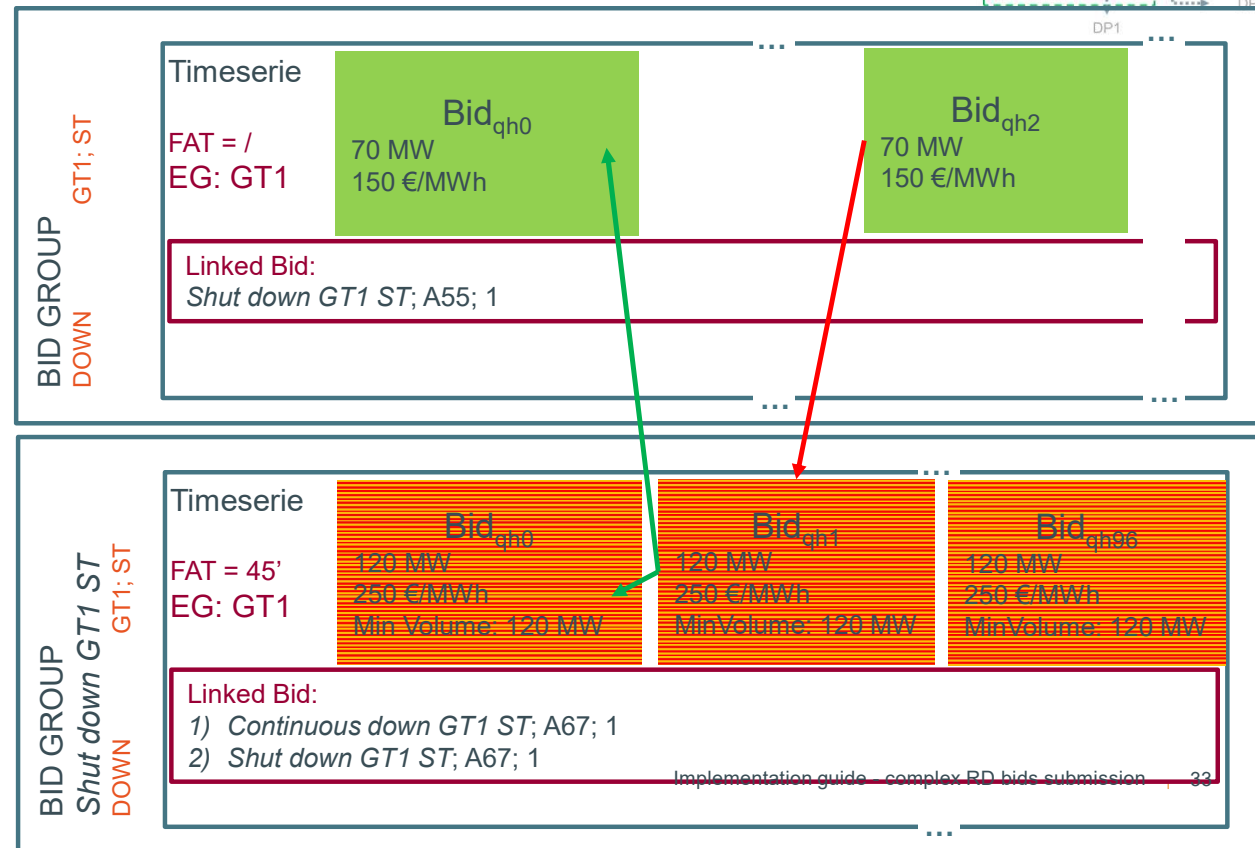
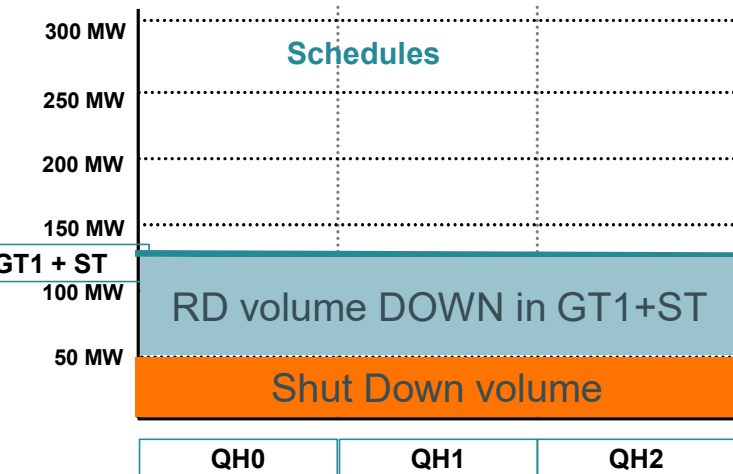
EXAMPLE OF COMPLEX BIDDING

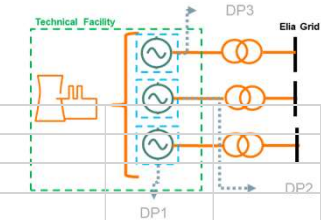
Combination of Conditional links & Exclusive Groups to reflect Operating modes

Current operating mode: → special case of shut down

GT1+ST

	Pmax	Pmin	Schedule
GT1	150 MW	30 MW	100 MW
GT2	150 MW	30 MW	0 MW
ST	100 MW	20 MW	20 MW





EXAMPLE OF COMPLEX BIDDING

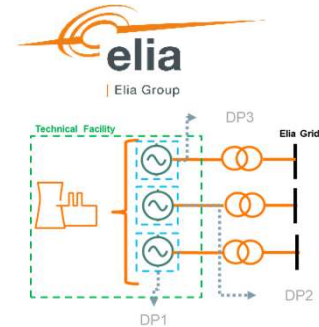
Combination of Conditional links & Exclusive Groups to reflect Operating modes

Current operating mode: → special case of shut down

GT1+ST

Bid Group		Status				
Bid Group Id	GT1_ST_continuous_down	Active				
TimeSeries Id	GT1_ST_continuous_down-DOWN-					
Direction	DOWN					
Contracted/Non Contracted						
Parent Child Id						
Exclusive Group Ids	GT1	00:00	00:15	00:30	00:45	
Linked Bid Group Id	GT1_ST_shut_down	Volume	70	70	70	70
Linked Bid Status	A55	Price	150	150	150	150
Linked Bid Level	1	Minimum Volume				
Full Activation Time		Activation Type				
Maximum Activation Time		Reason				
Delivery Points	EAN	GT1	TRUE	TRUE	TRUE	TRUE
	EAN	ST	TRUE	TRUE	TRUE	TRUE

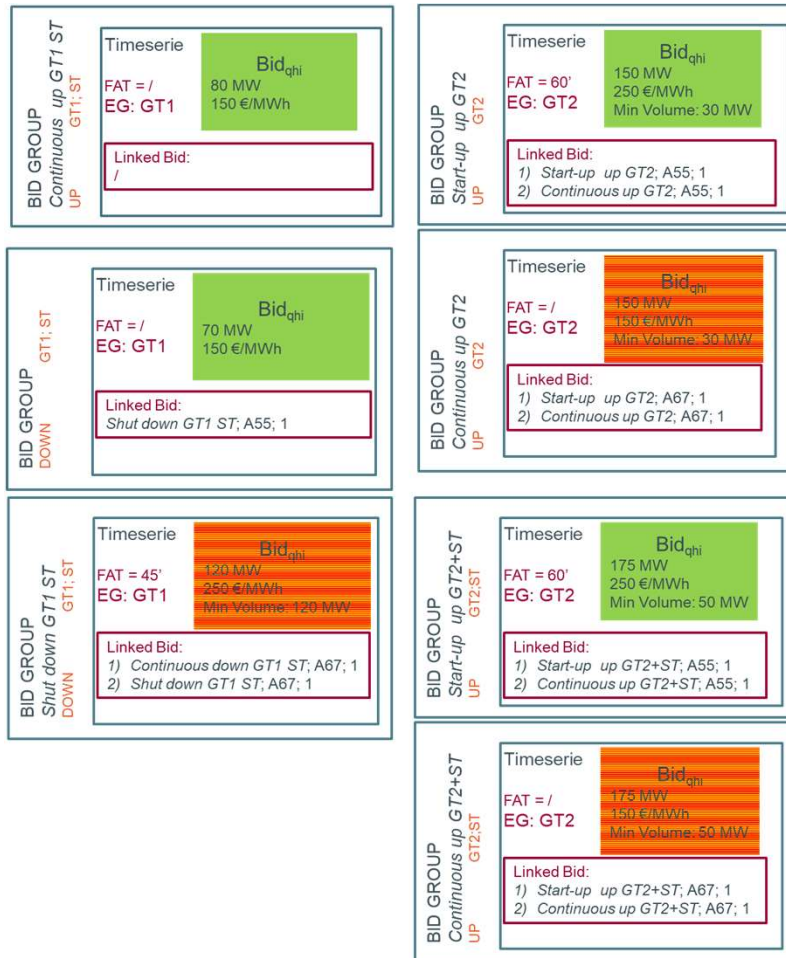
Bid Group		Status				
Bid Group Id	GT1_ST_shut_down	Active				
TimeSeries Id	GT1_ST_shut_down-DOWN-					
Direction	DOWN					
Contracted/Non Contracted						
Parent Child Id						
Exclusive Group Ids	GT1	00:00	00:15	00:30	00:45	
Linked Bid Group Id	GT1_ST_continuous_down;GT1_ST_shut_down	Volume	120	120	120	120
Linked Bid Status	A67;A67	Price	250	250	250	250
Linked Bid Level	1;1	Minimum Volume	120	120	120	120
Full Activation Time	60	Activation Type				
Maximum Activation Time		Reason				
Delivery Points	EAN	GT1	TRUE	TRUE	TRUE	TRUE
	EAN	ST	TRUE	TRUE	TRUE	TRUE



EXAMPLE OF COMPLEX BIDDING

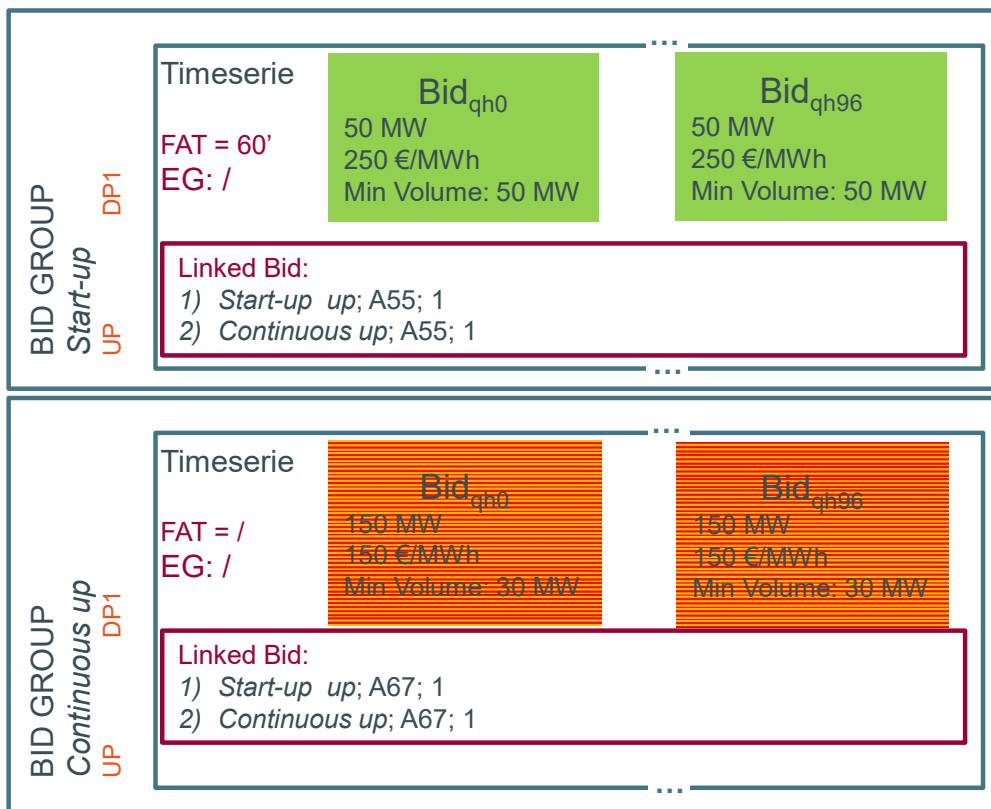
Combination of Conditional links & Exclusive Groups to reflect Operating modes

Summary



EXAMPLE OF START-UP

Combination of Conditional links & FAT to reflect slow start-ups

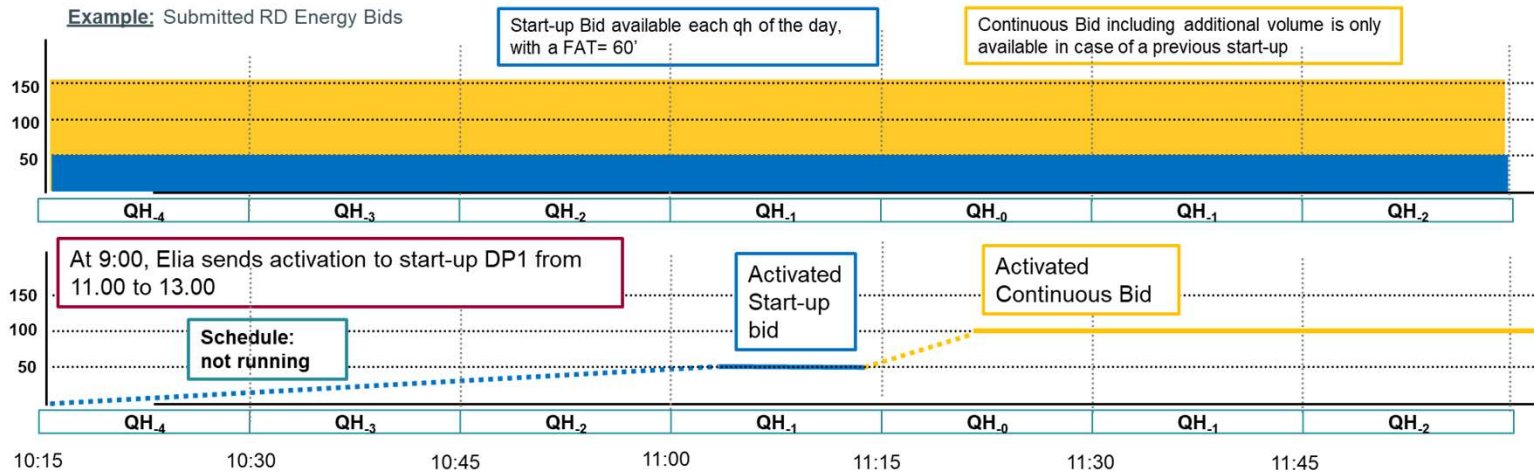


Hypothesis:

- 1 DP not running for the full day
- 2 Bid groups submitted
 - **Start-up** bids
 - initially **available**
 - Becomes **unavailable** if Bid_{Startup, qh-1} or if Bid_{Continuous, qh-1} is activated: **A55 link**
 - Includes a **FAT reflecting the ramp-up** of the start-up until Pmin (50 MW). FAT = 60'
 - **Continuous** bid
 - is initially **unavailable**
 - Becomes **available** if Bid_{Startup, qh-1} or if Bid_{Continuous, qh-1} **A55 link**
 - **FAT = 12,5'**

EXAMPLE OF START-UP

Combination of Conditional links & FAT to reflect slow start-ups



Activation:

- At 9:00, Elia sends activation to start-up DP1 from 11:00 to 13:00
- Activated bids:
 - Start-up bid of qh₁ (11:00 to 11:15)
 - Continuous bids from qh₀ to qh₇ (11:15 to 13:00)
- DP1 must reach 50 MW in qh₁ and 100 MW in qh₀

BID GROUP	Start-up DP1	Timeserie	Bid _{qh-3}	Bid _{qh-2}	Bid _{qh-1}	Bid _{qh0}	Bid _{qh1}	Bid _{qh2}
Start-up UP	FAT = 60' EG: /	50 MW	50 MW	50 MW	50 MW	50 MW	50 MW	50 MW
		250 €/MWh	250 €/MWh	250 €/MWh	250 €/MWh	250 €/MWh	250 €/MWh	250 €/MWh
Continuous UP	FAT = / EG: /	150 MW	150 MW	150 MW	150 MW	150 MW	150 MW	150 MW
		150 €/MWh	150 €/MWh	150 €/MWh	150 €/MWh	150 €/MWh	150 €/MWh	150 €/MWh
Linked Bid:		1) Start-up up; A55; 1 & 2) Continuous up; A55; 1						
Linked Bid:		1) Start-up up; A67; 1 & 2) Continuous up; A67; 1						

COMPLEMENTARY INFORMATION

- [Link](#) to the Manual on Energy Bidding
- Bilateral implementation or testing session can be organized.

Amandine Leroux:
Amandine.Leroux@elia.be

Arno Motté:
Arno.Motte@elia.be

Thank you.

